

Pressemitteilung

Flow at Frankfurt Airport EUROPA-CENTER presents a new office campus in the future district of Gateway Gardens

Just under a year and a half after the foundation stone was laid for the 37,000 m² office and commercial building, the major project at Frankfurt Airport is entering its final stage. At a festive event, the EUROPA-CENTER real estate group unveiled the building complex to the public for the first time and announced its name.

Work on the EUROPA-CENTER real estate group's most significant project to date, with its gleaming white facades, will be completed this year. The property in Frankfurt am Main is scheduled for completion in autumn 2022. Around 100 guests, including numerous project partners and real estate industry representatives, were given a sneak preview of the office campus at Amelia-Mary-Earhart-Straße 11–13 in the future Gateway Gardens district at a kick-off event entitled 'First Glimpse – Excellent Prospects'. During the gathering on the ground floor of the main building, the Hamburg-based developer and portfolio manager provided further details on the project's progress and presented the property's new show office. The highlight of the event was the unveiling of the building's name. For the presentation, a 120 m² banner was lowered from the building. The campus will be called Flow, reflecting the aesthetics of KSP Engel's sweeping, flowing façade design and the mobility and work-life balance offered by this forward-thinking development site at the airport.

Ralf-Jörg Kadenbach, CEO of the EUROPA-CENTER real estate group, said: 'I am delighted that, after the pandemic prevented us from holding a proper ceremony to lay the foundation stone a year and a half ago, we are now able to come together to experience this ambitious property in one of Germany's most dynamic locations. When Flow is completed on schedule next year, its future residents can look forward to a new home combining modern spaces, an ecological design, high-quality furnishings, and innovative services, all in an area offering excellent accessibility and well-developed infrastructure.'

Interior work has begun

Construction on the project began in 2019 and will provide 31,500 m² of office space and 800 m² of retail and restaurant space in the centre of the DGNB Platinum-certified district. Construction of the building's exterior was completed in

early summer, and the facade now shows what the Flow building will look like in future. Interior work on the 14-storey building has also recently begun. Overall project manager Andreas Jantzen explains: “Work is already progressing rapidly in all areas. The basic construction, particularly the fire protection and sanitary walls, is almost complete. The hybrid ceiling panels for heating, cooling and ventilation are currently being installed. Everything is running fully on schedule, so we are confident that we will be able to announce completion in autumn next year.”

Model office shows "inner workings"

During a tour of the new show office, guests at the event were given a first glimpse of what Flow will look like once it is completed. Spanning 330 m² on the first floor of the main building, the show office showcases a variety of features and space concepts, including in-house solutions with their own reception area and individually combinable spaces. Innovative details include digital wayfinding, an app-based parking space and e-car booking system, and underground car park access via QR code or number plate recognition. The design also pays special attention to sustainability, incorporating features such as heat recovery in ventilation and air conditioning, rainwater utilisation, green roofs, and central changing and shower rooms to promote bicycle mobility. The property has already been pre-certified according to DGNB Gold standards and is expected to receive the award upon completion.

Advantageous locations in Gateway Gardens

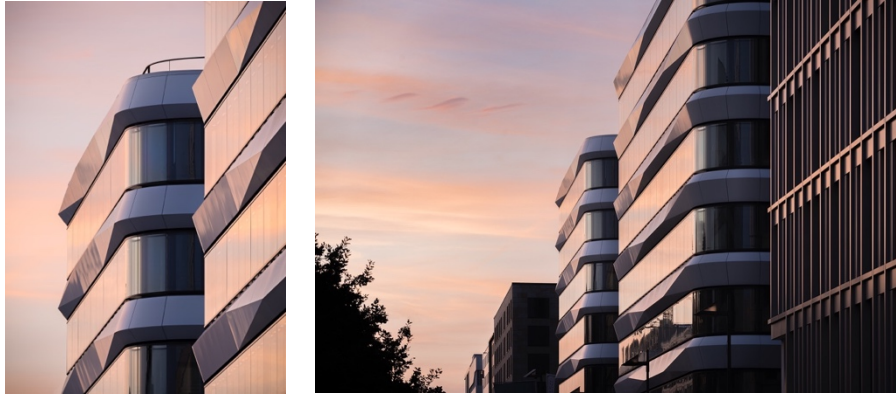
Future tenants will benefit from the excellent accessibility of this forward-looking development site, which is located at the intersection of the airport, the Frankfurter Kreuz motorway junction and the ICE train station. Its central location within the district, which is already home to well-known companies such as Deutsche Bahn, Siemens and Goldbeck, is also an advantage. Overall project manager Andreas Jantzen continues: “Our Flow office campus is located directly opposite the park in Gateway Gardens and right by the S-Bahn station, so all local amenities, restaurants and hotels — from Hyatt Place to Holiday Inn — are within walking distance.”

Important strategic step for EUROPA-CENTER

EUROPA-CENTER will act as a long-term portfolio manager for future tenants, employing its own property management staff on site to address users' concerns on an ongoing basis. This new construction project is also a significant strategic step for the Hamburg-based real estate group, which will celebrate its 50th anniversary in 2022. EUROPA-CENTER is experiencing growth both nationally and across Europe. To date, it has developed 26 buildings, including those in Hamburg, Berlin, Bremen, Essen and Barcelona, with a total area of almost 400,000 m². As part of its expansion, it is planning to build two further buildings in Eschborn as a follow-up project to Flow in the Rhine-Main area.

FLOW

The logo of the new office campus is reflective of the seemingly flowing architecture.



The imposing facade of the Flow office campus has already been completed and is illuminated by the evening sun. Photographic documentation: Adrian Schulz, Berlin



The visualisation illustrates the anticipated appearance of Flow in Gateway Gardens from autumn 2022 onwards. Ralf-Jörg Kadenbach (top right) and Andreas Jantzen (bottom right), the CEO and overall project manager respectively, provided information on the current status of the project at the event. Visualisation: EUROPA-CENTER, photographs of individuals: Adele Marschner, Hamburg

Hamburg, 04.11.2021

Pressekontakt

DEUTSCHER PRESSESTERN

Natalie Burkhart

Tel. 0611 39539-12

E-Mail: n.burkhart@public-star.de

EUROPA-CENTER

Franziska Nikolaus

Tel. 040 27144-471

E-Mail: nikolaus@europa-center.de



About the EUROPA-CENTER Real Estate Group

The EUROPA-CENTER real estate group, headquartered in Hamburg, functions as an investor, developer and portfolio manager of high-quality, sustainable office and commercial buildings, hotels, business apartments, logistics and industrial warehouses. To date, 26 buildings with a total construction volume of approximately 395,000 m² have been developed under the EUROPA-CENTER brand. In addition to the existing locations in Hamburg, Barcelona, Berlin, Bremen, Essen and Frankfurt, new sites in Düsseldorf, Hanover, Cologne, Lisbon, Madrid and Munich are currently being acquired.